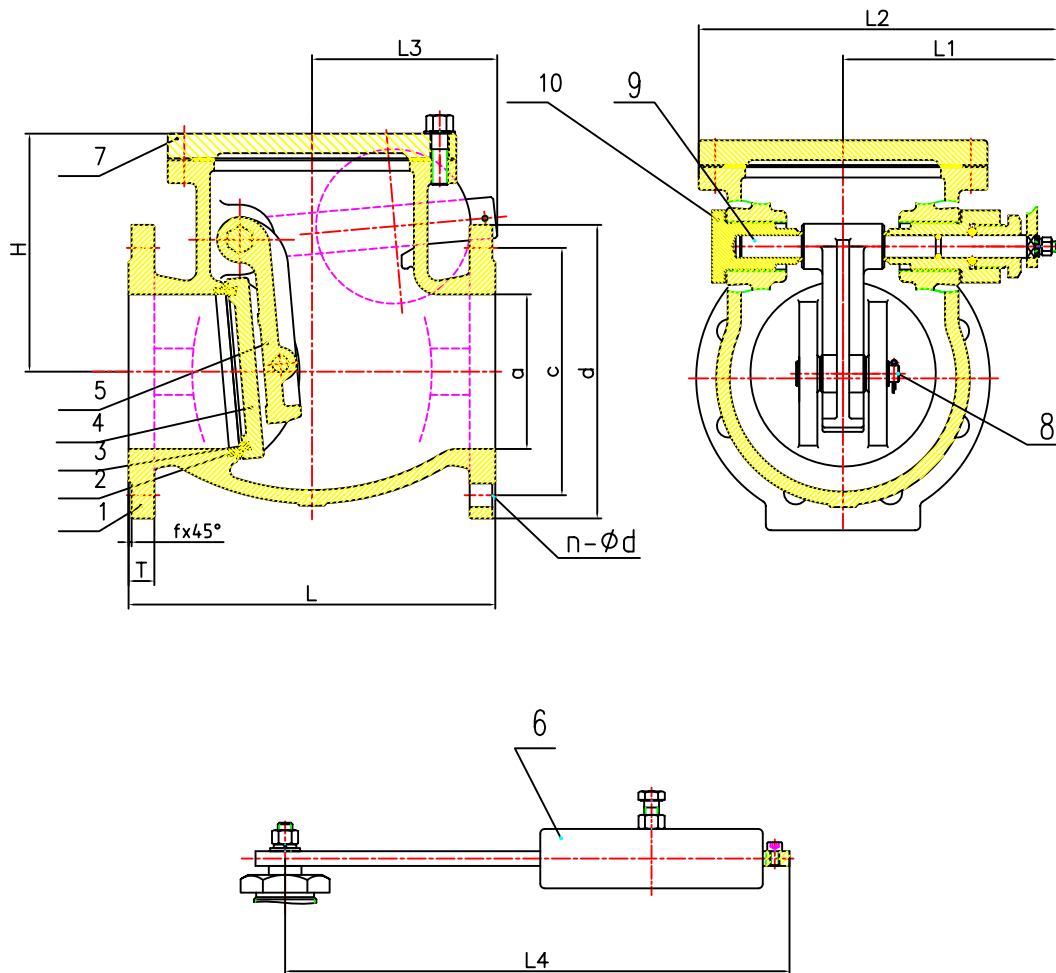


MVS-492LW BS5153 SWING CHECKVALVE



Materials

| No | Part | Grade |
|-----|---------------|--|
| 1 | Body | Cast Iron BS1452 220 |
| 4 | Disc | Cast Iron BS1452 220 |
| 7φ6 | Cover, Weight | Cast Iron BS1452 220 |
| 9,8 | Shaftø Pin | Stainless Steel |
| 2φ3 | Seat Ring | Bronze *BS1400 LG2 |
| 5 | Hinge | DN50-150*BS1400 LG2>DN200-400*BS1452 220 |
| 10 | Nut | DN50-200*BS1400 LG2>DN200-400*BS1452 220 |

Dimension: mm (BS4504-PN16)

| SIZE | a | c | d | T | f | L | x-n | H | L1 | L2 | L3 | L4 |
|------|-----|-----|-----|----|---|-----|--------|-----|-----|-----|-----|-----|
| 50 | 50 | 125 | 165 | 20 | 3 | 203 | 4-φ19 | 135 | 127 | 210 | 110 | 150 |
| 65 | 65 | 145 | 185 | 20 | 3 | 216 | 4-φ19 | 148 | 130 | 220 | 105 | 150 |
| 80 | 80 | 160 | 200 | 22 | 3 | 241 | 8-φ19 | 178 | 160 | 265 | 120 | 165 |
| 100 | 100 | 180 | 220 | 24 | 3 | 292 | 8-φ19 | 195 | 170 | 280 | 148 | 195 |
| 125 | 125 | 210 | 250 | 26 | 3 | 330 | 8-φ19 | 210 | 201 | 335 | 148 | 210 |
| 150 | 150 | 240 | 285 | 26 | 3 | 356 | 8-φ23 | 250 | 220 | 366 | 175 | 245 |
| 200 | 200 | 295 | 340 | 30 | 3 | 495 | 12-φ23 | 300 | 260 | 395 | 245 | 340 |
| 250 | 250 | 355 | 405 | 32 | 3 | 622 | 12-φ28 | 335 | 305 | 520 | 285 | 400 |
| 300 | 300 | 410 | 460 | 32 | 4 | 698 | 12-φ28 | 365 | 345 | 597 | 325 | 465 |
| 350 | 350 | 470 | 520 | 36 | 4 | 787 | 16-φ28 | 415 | 425 | 730 | 350 | 520 |
| 400 | 400 | 525 | 580 | 38 | 4 | 914 | 16-φ31 | 455 | 450 | 792 | 330 | 530 |

Pressure / Temperature Ratings

| Temperature (C) | -10 + 100 | 120 | 140 | 150 | 160 | 180 | 220 |
|-----------------|-----------|-----|------|------|------|------|------|
| Pressure (Bar) | 16 | 16 | 14.9 | 14.4 | 13.7 | 13.4 | 12.1 |

Mechtech Valve Services,
The Stenders, Mitcheldean,
Glos. GL17 0ZE
Tel: 01594 541717 Fax: 01594 541716

Mechtech Valve Services,
33 Pennycress, Locks Heath,
Southampton. Hants. SO31 6SY
Tel: 01489 609609 Fax: 01489 609610

www.mechtechvalveservices.com

MVS-492LW Datasheet

MVS-492LW DS Rev 001
21-June-2006

Copyright 2006