

# MVS (EXPORT) LTD

(MECHTECH VALVE SERVICES)

**MVS 202**

Bronze Globe Steam Stop Valve - Flanged

## Features

### Specifications

Screwed in Bonnet, Inside Screw, Rising Stem, Renewable S.S. Seat and Disc with Back Seat arrangement, Handwheel operated.

### End Connections

Flanged ends to BS10 Table 'H'

### Test Pressures

Max. Steam Working Pressure 17.58 Kg/cm<sup>2</sup>  
Hydraulic Test Pressure 35.16 Kg/cm<sup>2</sup>

### Max. Working Temperature

225°C



## Suitability

Water



Steam



Gas



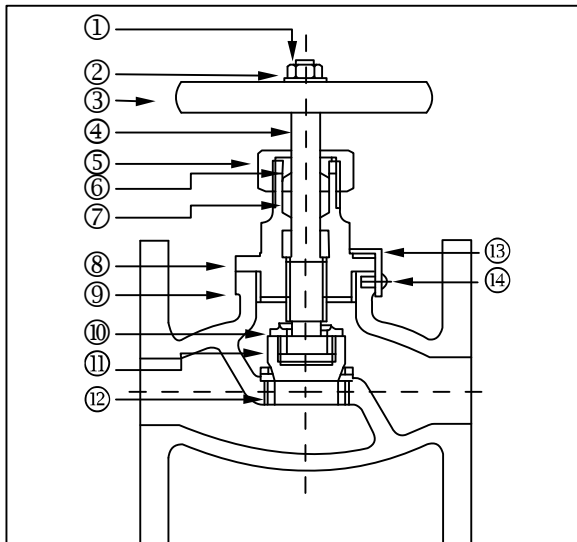
Oil



Air

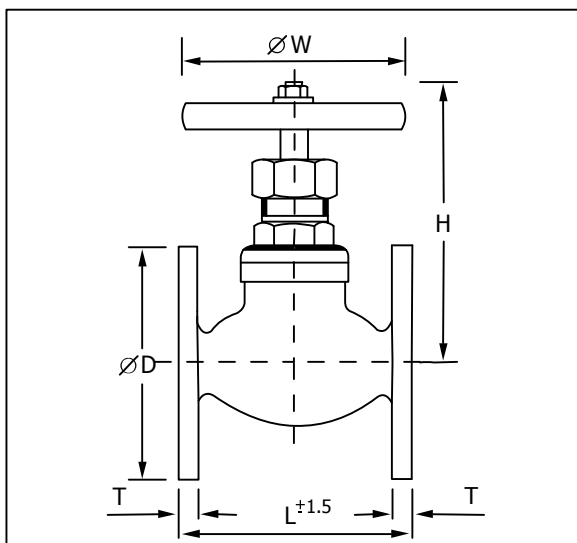


## Material Combination



P/No.	Name of Part	Material	Specifications
1	Nut	M.S.	-
2	Washer	M.S.	-
3	Handwheel	C.I.	IBR 86 to 93 Gr.A
4	Stem	S.S.	AISI-410
5	Gland Nut	Bronze	IBR 282 [a] [iv] Gr.B
6	Gland	Bronze	IBR 282 [a] [iv] Gr.B
7	Packing	Graphited Asbestos	-
8	Bonnet	Bronze	IBR 282 [a] [iv] Gr.B
9	Body	Bronze	IBR 282 [a] [iv] Gr.B
10	Disc Nut	Bronze	IBR 282 [a] [iv] Gr.B
11	Disc	S.S.	AISI-410
12	Body Seat Ring	S.S.	AISI-410
13	Locking Washer	Brass	-
14	Screw	M.S.	-

## Dimensional Data



Nominal Size	Length	Height	ØHW	Ø D	T
15	102	115	80	4.1/2	3/8
20	114	115	80	4.1/2	3/8
25	127	130	100	4.3/4	7/16
32	140	160	127	5.1/4	7/16
40	150	170	127	5.1/2	1/2
50	178	185	150	6.1/2	1/2

MVS (Export) Ltd.  
The Stenders  
Mitcheldean  
Gloucestershire  
GL17 OZE

Tel: 01594 541717  
Fax: 01594 541 716  
Mobile: 07813 471 903  
or 07730 042815  
www.mechtechvalveservices.com